



Demographic and Income Comparison Profile

Pontiac, Michigan, United States
Ring Bands: 0-1, 1-3, 3-5 mile radii

Prepared by Esri
Latitude: 42.63892
Longitude: -83.29105

	0 - 1 mile	1 - 3 mile	3 - 5 mile
Census 2010 Summary			
Population	11,364	60,113	78,385
Households	3,862	23,483	32,204
Families	2,185	14,324	20,369
Average Household Size	2.72	2.49	2.36
Owner Occupied Housing Units	1,566	13,278	22,286
Renter Occupied Housing Units	2,296	10,205	9,918
Median Age	34.3	35.9	39.6
2016 Summary			
Population	11,600	61,146	79,667
Households	4,002	23,972	32,884
Families	2,231	14,433	20,491
Average Household Size	2.68	2.48	2.35
Owner Occupied Housing Units	1,569	13,318	22,416
Renter Occupied Housing Units	2,433	10,654	10,468
Median Age	35.1	36.8	40.6
Median Household Income	\$21,355	\$37,658	\$63,656
Average Household Income	\$32,425	\$56,218	\$100,732
2021 Summary			
Population	11,912	62,715	81,610
Households	4,144	24,644	33,795
Families	2,293	14,741	20,903
Average Household Size	2.66	2.47	2.35
Owner Occupied Housing Units	1,615	13,656	22,934
Renter Occupied Housing Units	2,529	10,988	10,861
Median Age	36.3	37.1	41.1
Median Household Income	\$21,310	\$38,393	\$74,091
Average Household Income	\$34,280	\$60,937	\$110,266
Trends: 2016-2021 Annual Rate			
Population	0.53%	0.51%	0.48%
Households	0.70%	0.55%	0.55%
Families	0.55%	0.42%	0.40%
Owner Households	0.58%	0.50%	0.46%
Median Household Income	-0.04%	0.39%	3.08%

Source: U.S. Census Bureau, Census 2010 Summary File 1. Esri forecasts for 2016 and 2021.

March 16, 2017



Demographic and Income Comparison Profile

Pontiac, Michigan, United States
 Ring Bands: 0-1, 1-3, 3-5 mile radii

Prepared by Esri
 Latitude: 42.63892
 Longitude: -83.29105

2016 Households by Income	0 - 1 mile		1 - 3 mile		3 - 5 mile	
	Number	Percent	Number	Percent	Number	Percent
<\$15,000	1,404	35.1%	4,766	19.9%	2,958	9.0%
\$15,000 - \$24,999	817	20.4%	3,425	14.3%	3,079	9.4%
\$25,000 - \$34,999	542	13.5%	2,995	12.5%	3,103	9.4%
\$35,000 - \$49,999	419	10.5%	3,453	14.4%	3,953	12.0%
\$50,000 - \$74,999	469	11.7%	3,846	16.0%	5,294	16.1%
\$75,000 - \$99,999	179	4.5%	2,120	8.8%	4,235	12.9%
\$100,000 - \$149,999	126	3.1%	1,983	8.3%	4,616	14.0%
\$150,000 - \$199,999	29	0.7%	674	2.8%	1,907	5.8%
\$200,000+	17	0.4%	710	3.0%	3,739	11.4%
Median Household Income	\$21,355		\$37,658		\$63,656	
Average Household Income	\$32,425		\$56,218		\$100,732	
Per Capita Income	\$13,276		\$23,004		\$42,247	

2021 Households by Income	0 - 1 mile		1 - 3 mile		3 - 5 mile	
	Number	Percent	Number	Percent	Number	Percent
<\$15,000	1,491	36.0%	4,975	20.2%	2,948	8.7%
\$15,000 - \$24,999	800	19.3%	3,423	13.9%	2,981	8.8%
\$25,000 - \$34,999	605	14.6%	3,246	13.2%	3,168	9.4%
\$35,000 - \$49,999	298	7.2%	2,425	9.8%	2,301	6.8%
\$50,000 - \$74,999	524	12.6%	4,179	17.0%	5,647	16.7%
\$75,000 - \$99,999	218	5.3%	2,363	9.6%	4,790	14.2%
\$100,000 - \$149,999	150	3.6%	2,357	9.6%	5,504	16.3%
\$150,000 - \$199,999	39	0.9%	862	3.5%	2,322	6.9%
\$200,000+	17	0.4%	814	3.3%	4,135	12.2%
Median Household Income	\$21,310		\$38,393		\$74,091	
Average Household Income	\$34,280		\$60,937		\$110,266	
Per Capita Income	\$13,944		\$24,928		\$46,322	

Data Note: Income is expressed in current dollars.

Source: U.S. Census Bureau, Census 2010 Summary File 1. Esri forecasts for 2016 and 2021.



Demographic and Income Comparison Profile

Pontiac, Michigan, United States
 Ring Bands: 0-1, 1-3, 3-5 mile radii

Prepared by Esri
 Latitude: 42.63892
 Longitude: -83.29105

2010 Population by Age	0 - 1 mile		1 - 3 mile		3 - 5 mile	
	Number	Percent	Number	Percent	Number	Percent
Age 0 - 4	893	7.9%	4,598	7.6%	4,668	6.0%
Age 5 - 9	806	7.1%	4,177	6.9%	4,511	5.8%
Age 10 - 14	796	7.0%	4,040	6.7%	4,782	6.1%
Age 15 - 19	942	8.3%	4,478	7.4%	5,761	7.3%
Age 20 - 24	927	8.2%	4,042	6.7%	5,289	6.7%
Age 25 - 34	1,416	12.5%	7,954	13.2%	9,848	12.6%
Age 35 - 44	1,579	13.9%	8,724	14.5%	9,890	12.6%
Age 45 - 54	1,767	15.5%	8,566	14.3%	11,582	14.8%
Age 55 - 64	1,222	10.8%	6,948	11.6%	10,201	13.0%
Age 65 - 74	597	5.3%	3,699	6.2%	6,212	7.9%
Age 75 - 84	324	2.9%	2,106	3.5%	3,882	5.0%
Age 85+	98	0.9%	780	1.3%	1,757	2.2%

2016 Population by Age	Number		Percent		Number		Percent	
	Number	Percent	Number	Percent	Number	Percent	Number	Percent
Age 0 - 4	886	7.6%	4,433	7.2%	4,440	5.6%	4,440	5.6%
Age 5 - 9	805	6.9%	4,160	6.8%	4,508	5.7%	4,508	5.7%
Age 10 - 14	759	6.5%	4,011	6.6%	4,684	5.9%	4,684	5.9%
Age 15 - 19	795	6.9%	4,028	6.6%	5,449	6.8%	5,449	6.8%
Age 20 - 24	945	8.1%	4,448	7.3%	5,481	6.9%	5,481	6.9%
Age 25 - 34	1,596	13.8%	8,053	13.2%	10,151	12.7%	10,151	12.7%
Age 35 - 44	1,483	12.8%	8,196	13.4%	9,353	11.7%	9,353	11.7%
Age 45 - 54	1,697	14.6%	8,227	13.5%	10,485	13.2%	10,485	13.2%
Age 55 - 64	1,441	12.4%	7,689	12.6%	11,078	13.9%	11,078	13.9%
Age 65 - 74	749	6.5%	4,866	8.0%	8,016	10.1%	8,016	10.1%
Age 75 - 84	327	2.8%	2,186	3.6%	4,023	5.0%	4,023	5.0%
Age 85+	117	1.0%	848	1.4%	2,000	2.5%	2,000	2.5%

2021 Population by Age	Number		Percent		Number		Percent	
	Number	Percent	Number	Percent	Number	Percent	Number	Percent
Age 0 - 4	892	7.5%	4,427	7.1%	4,478	5.5%	4,478	5.5%
Age 5 - 9	801	6.7%	4,264	6.8%	4,410	5.4%	4,410	5.4%
Age 10 - 14	764	6.4%	4,125	6.6%	4,769	5.8%	4,769	5.8%
Age 15 - 19	760	6.4%	3,996	6.4%	5,448	6.7%	5,448	6.7%
Age 20 - 24	853	7.2%	4,113	6.6%	5,129	6.3%	5,129	6.3%
Age 25 - 34	1,700	14.3%	8,739	13.9%	10,557	12.9%	10,557	12.9%
Age 35 - 44	1,477	12.4%	7,927	12.6%	9,745	11.9%	9,745	11.9%
Age 45 - 54	1,613	13.5%	7,904	12.6%	9,751	11.9%	9,751	11.9%
Age 55 - 64	1,588	13.3%	7,978	12.7%	11,100	13.6%	11,100	13.6%
Age 65 - 74	943	7.9%	5,674	9.0%	9,349	11.5%	9,349	11.5%
Age 75 - 84	392	3.3%	2,697	4.3%	4,784	5.9%	4,784	5.9%
Age 85+	127	1.1%	872	1.4%	2,090	2.6%	2,090	2.6%

Source: U.S. Census Bureau, Census 2010 Summary File 1. Esri forecasts for 2016 and 2021.



Demographic and Income Comparison Profile

Pontiac, Michigan, United States
 Ring Bands: 0-1, 1-3, 3-5 mile radii

Prepared by Esri
 Latitude: 42.63892
 Longitude: -83.29105

2010 Race and Ethnicity	0 - 1 mile		1 - 3 mile		3 - 5 mile	
	Number	Percent	Number	Percent	Number	Percent
White Alone	3,220	28.3%	27,978	46.5%	61,222	78.1%
Black Alone	6,576	57.9%	24,674	41.0%	8,565	10.9%
American Indian Alone	69	0.6%	305	0.5%	231	0.3%
Asian Alone	387	3.4%	1,666	2.8%	4,746	6.1%
Pacific Islander Alone	1	0.0%	13	0.0%	20	0.0%
Some Other Race Alone	644	5.7%	2,999	5.0%	1,575	2.0%
Two or More Races	468	4.1%	2,479	4.1%	2,026	2.6%
Hispanic Origin (Any Race)	1,680	14.8%	8,358	13.9%	4,960	6.3%

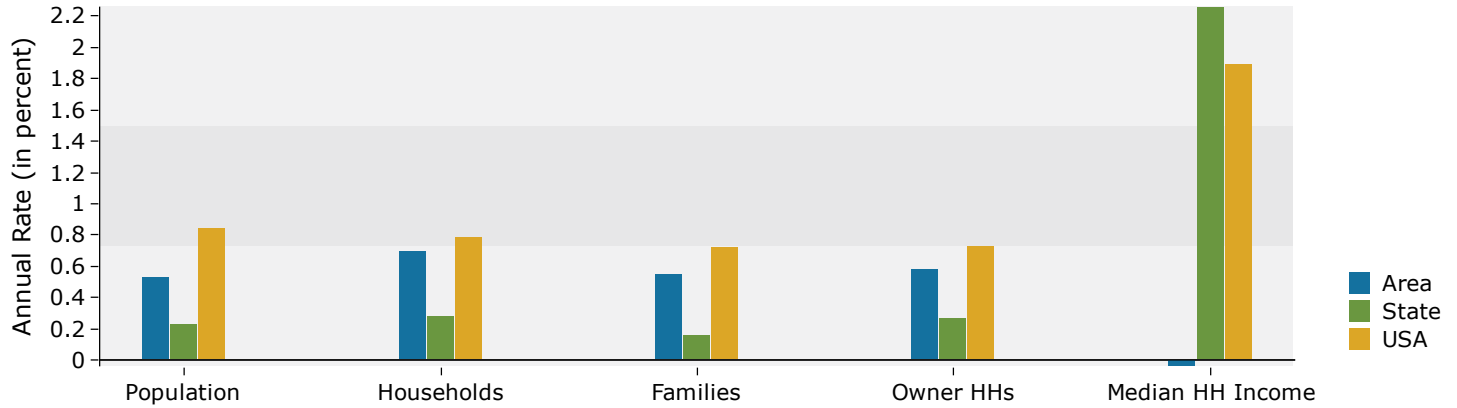
2016 Race and Ethnicity	0 - 1 mile		1 - 3 mile		3 - 5 mile	
	Number	Percent	Number	Percent	Number	Percent
White Alone	3,017	26.0%	26,632	43.6%	59,752	75.0%
Black Alone	6,842	59.0%	26,210	42.9%	9,562	12.0%
American Indian Alone	70	0.6%	303	0.5%	233	0.3%
Asian Alone	479	4.1%	1,990	3.3%	5,900	7.4%
Pacific Islander Alone	1	0.0%	17	0.0%	29	0.0%
Some Other Race Alone	686	5.9%	3,259	5.3%	1,819	2.3%
Two or More Races	505	4.4%	2,735	4.5%	2,373	3.0%
Hispanic Origin (Any Race)	1,799	15.5%	9,099	14.9%	5,758	7.2%

2021 Race and Ethnicity	0 - 1 mile		1 - 3 mile		3 - 5 mile	
	Number	Percent	Number	Percent	Number	Percent
White Alone	2,849	23.9%	25,653	40.9%	58,841	72.1%
Black Alone	7,196	60.4%	28,047	44.7%	10,746	13.2%
American Indian Alone	69	0.6%	302	0.5%	236	0.3%
Asian Alone	554	4.7%	2,307	3.7%	7,039	8.6%
Pacific Islander Alone	1	0.0%	17	0.0%	35	0.0%
Some Other Race Alone	717	6.0%	3,465	5.5%	2,033	2.5%
Two or More Races	526	4.4%	2,923	4.7%	2,680	3.3%
Hispanic Origin (Any Race)	1,901	16.0%	9,804	15.6%	6,573	8.1%

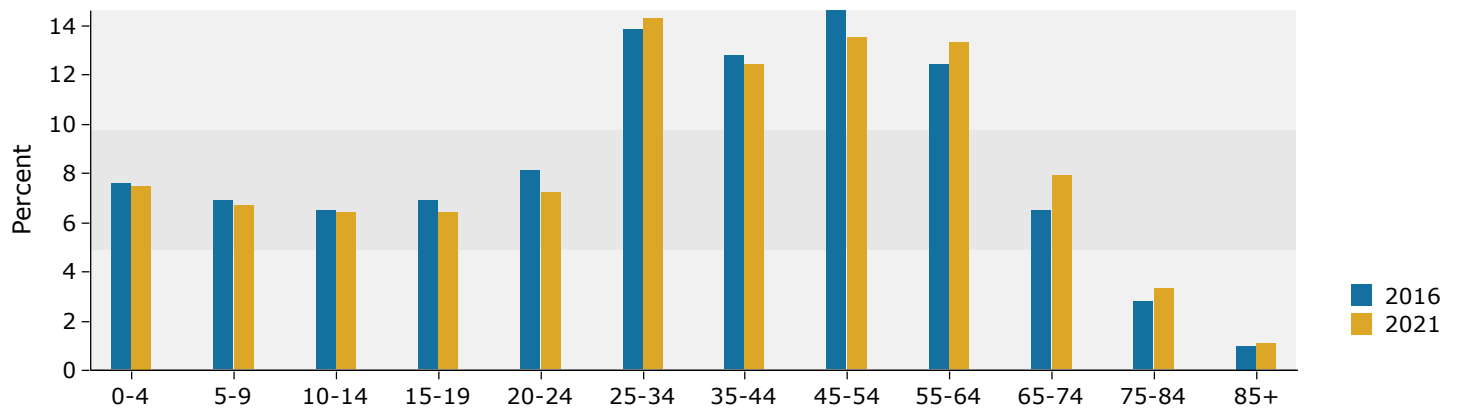
Source: U.S. Census Bureau, Census 2010 Summary File 1. Esri forecasts for 2016 and 2021.

0 - 1 mile

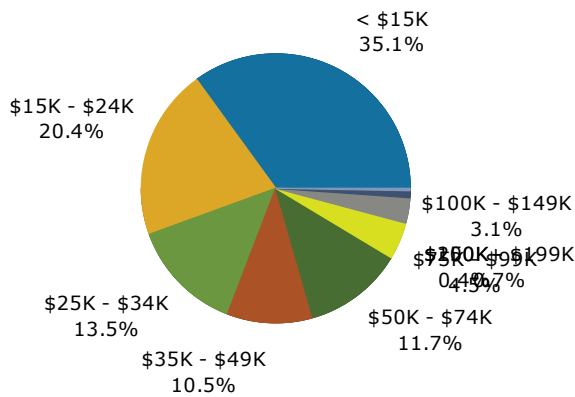
Trends 2016-2021



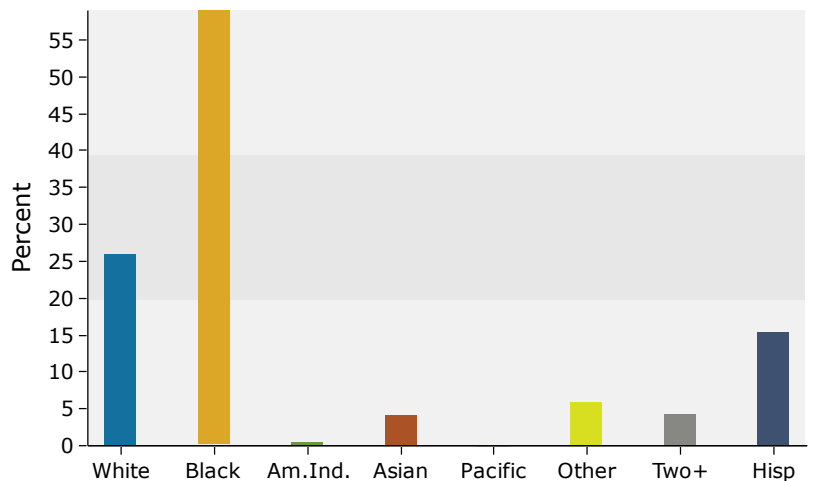
Population by Age



2016 Household Income



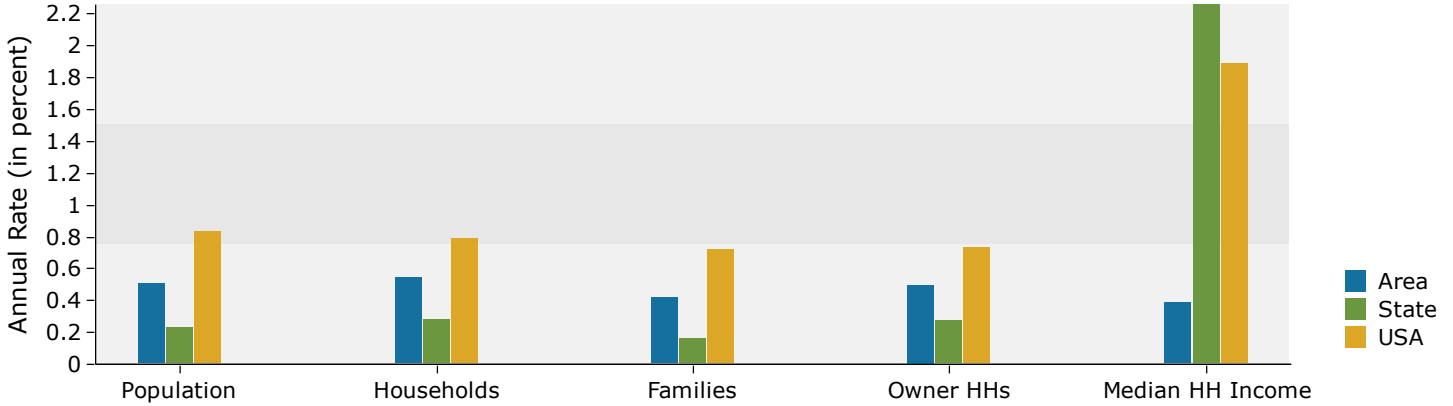
2016 Population by Race



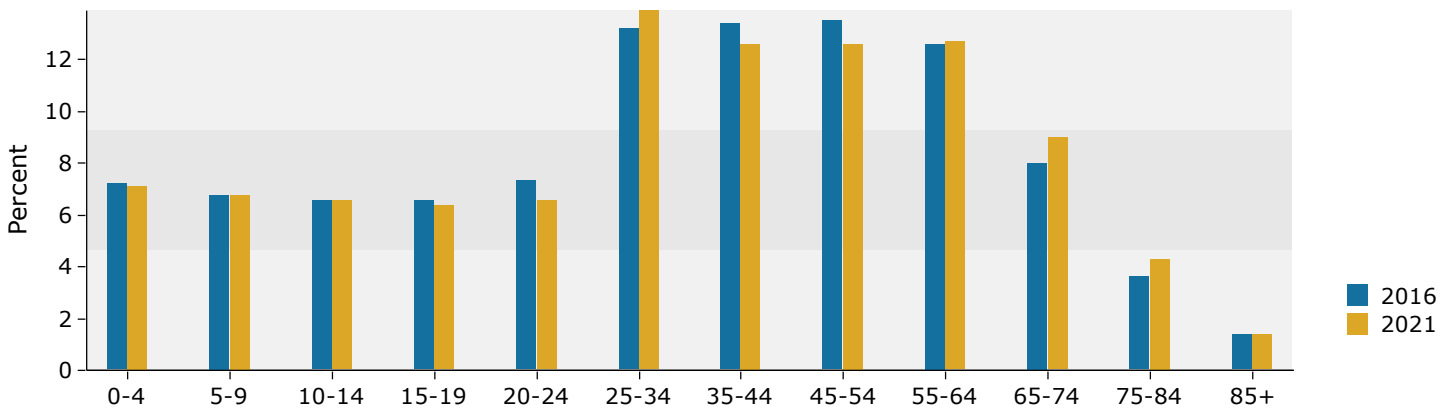
Source: U.S. Census Bureau, Census 2010 Summary File 1. Esri forecasts for 2016 and 2021.

1 - 3 mile

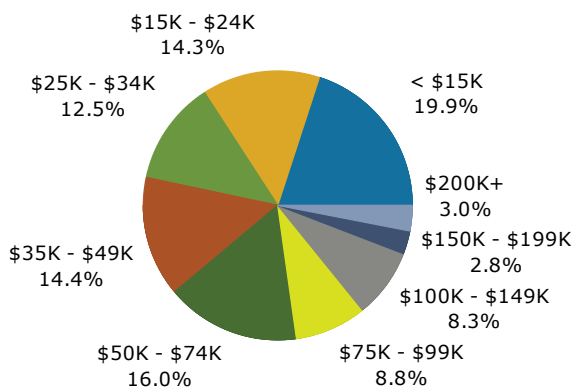
Trends 2016-2021



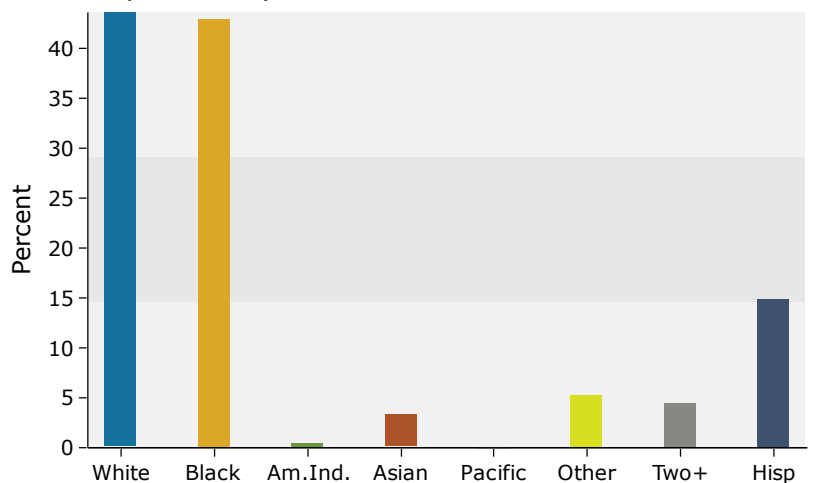
Population by Age



2016 Household Income



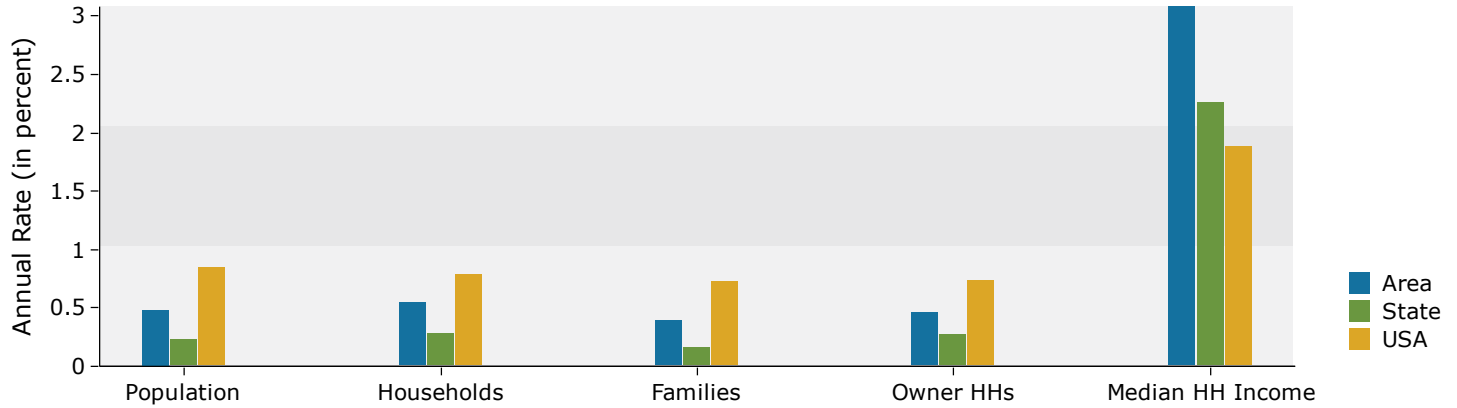
2016 Population by Race



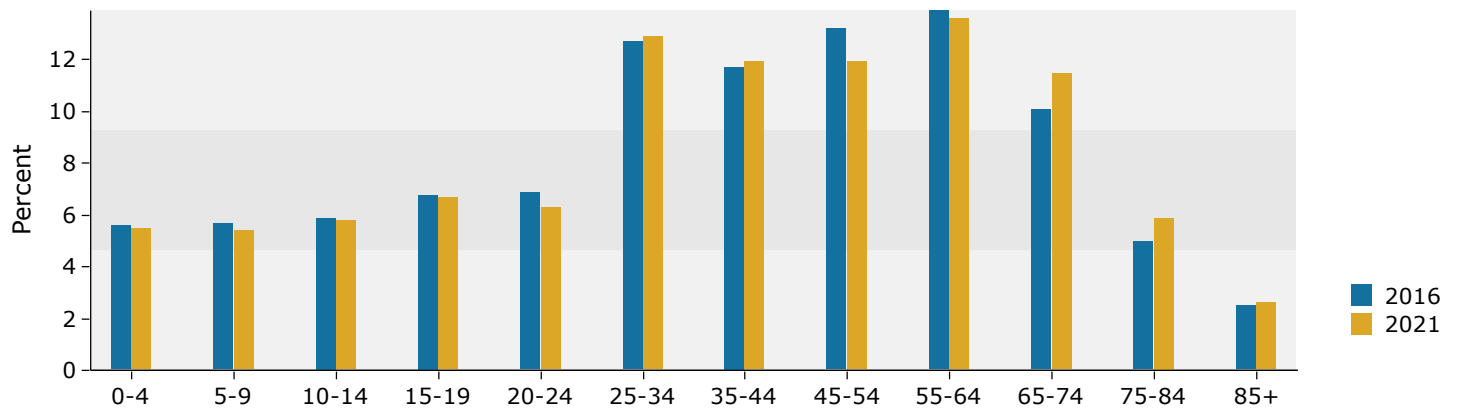
Source: U.S. Census Bureau, Census 2010 Summary File 1. Esri forecasts for 2016 and 2021.

3 - 5 mile

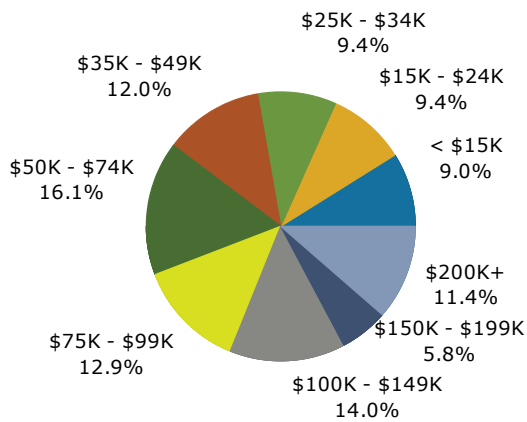
Trends 2016-2021



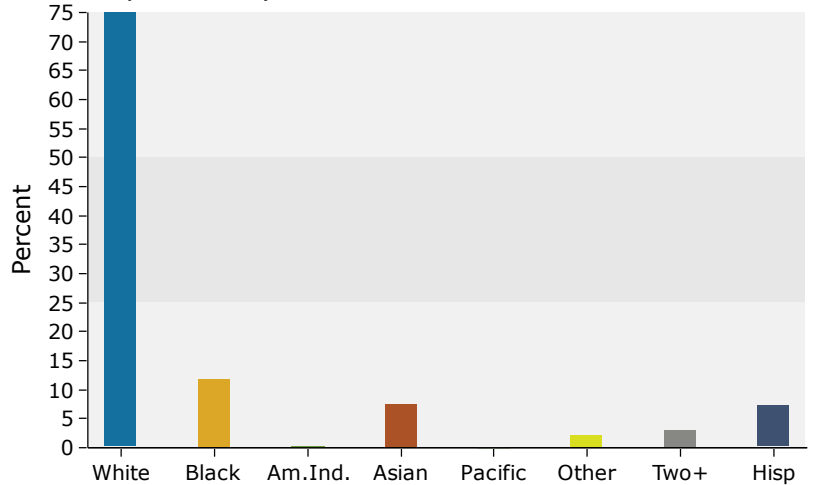
Population by Age



2016 Household Income



2016 Population by Race



Source: U.S. Census Bureau, Census 2010 Summary File 1. Esri forecasts for 2016 and 2021.